
The dual profile of migration in Tuscany

L. Porciani - F. Benassi

Department of Statistics and Mathematics Applied to Economics
University of Pisa

Autumn Meeting “Demographic Aspects of Migration”

09-10 October 2008

Nuremberg

Structure

- o Theoretical framework
 - Main international migration theories

- o Data analysis and empirical results
 - Spatial distribution of migrants
 - Age and gender profile of migrants

- o Concluding thoughts

Main international migration theories I

Macro – Micro – Meso approaches

● Macro approach

Structural, social and economical factors are the main determinants of migration: push/pull factor (Ravenstein 1889; Todaro 1969), dual labor market (Priore 1979)

● Micro approach

The migrant is a rational human being, he/she choose to migrate following a cost/benefit calculation (Borjas 1990)

☞ New economics of migration shifts the focus from an individual to family/household context (Stark/Bloom 1985)

Main international migration theories II

Meso approach

- Meso approach

- ↻ Individuals or families cannot make decisions independent of the structures in which they find themselves. Nor do structures exist independently of individuals.

An example of this interrelationship is *migrant networks* - through which individual pioneer migrants help those who follow them to settle and find work (Massey 1990)

A “new” feature in the international migration portrait

- These theories concern essentially the movements from less developed countries (LDCs) to more developed countries (MDCs)
 - Labor migration, characterized by a young age-structure and a male prevalence
- And what about the migration from MDCs?
 - Retirement migration (a)
 - “Die Aussteiger” (b)

a. Retirement migration

Arbitrariness of definition of “retirement age” across nations

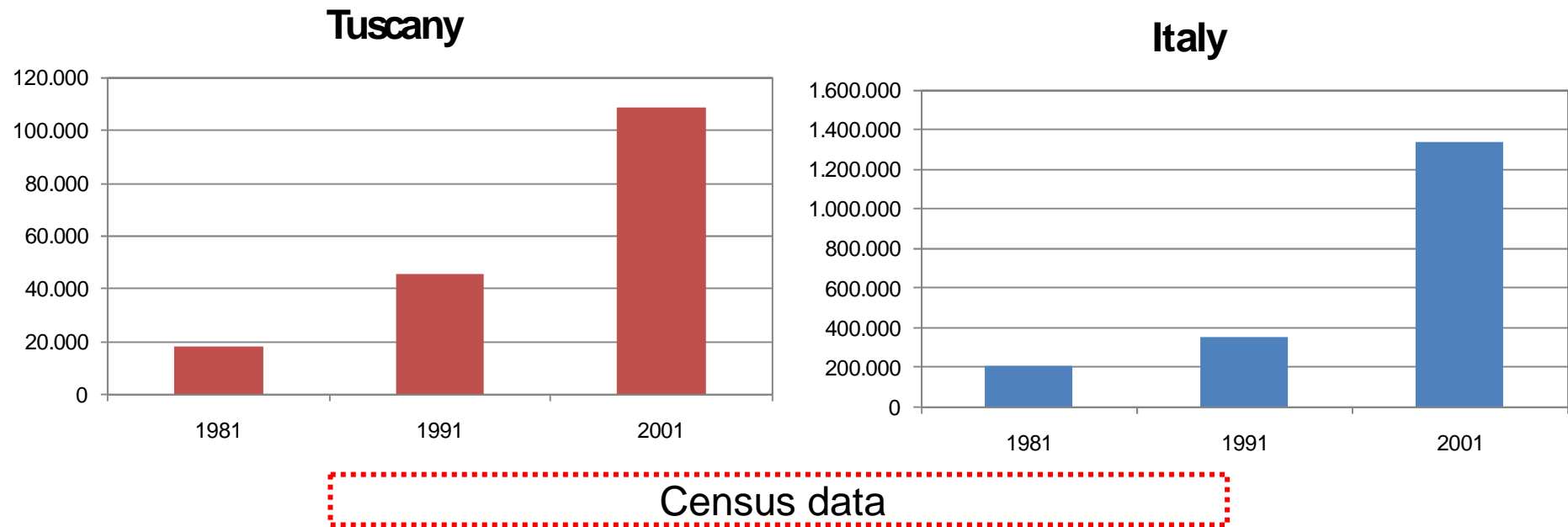
- Elderly who have the means in terms of finance and personal skills to choose to emigrate at some point after the end of their formal career workers (King 1998)
- They move toward *amenity-rich* destination with sunnier, warmer and recreational more enjoyable environments (Rogers 1992)

b. “Die Aussteiger”

Aussteigen means “go down”

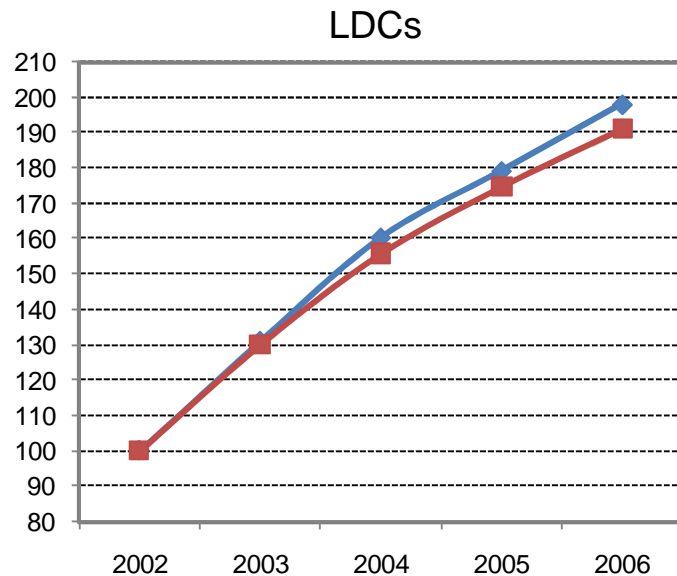
- “Die Aussteiger” decide to move to change their lives
- They lived a sort of psychological detachment from their environment
- They belong to upper-middle social class, come from big cities and move towards a warmer, less industrialized - almost wild – places

Trends of foreign presence: Italy and Tuscany

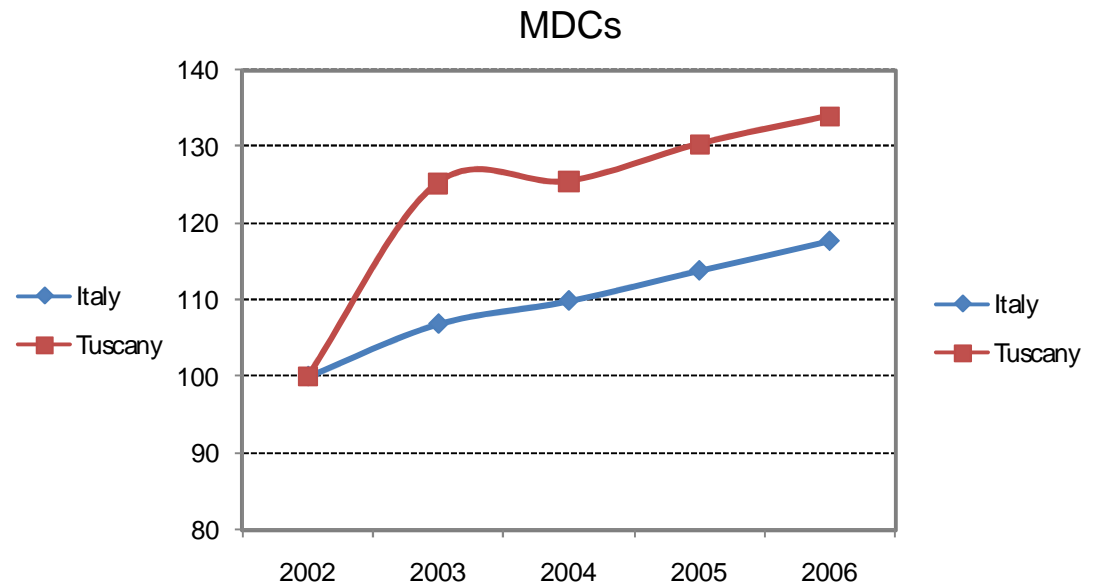


Trends of foreigners from LDCs and MDCs: Italy and Tuscany

Index numbers with fixed base (year 2002 = 100)



Anagrafe data



Anagrafe data

MDCs and LDCs migrants

We have studied MDCs and LDCs migrants in terms of:

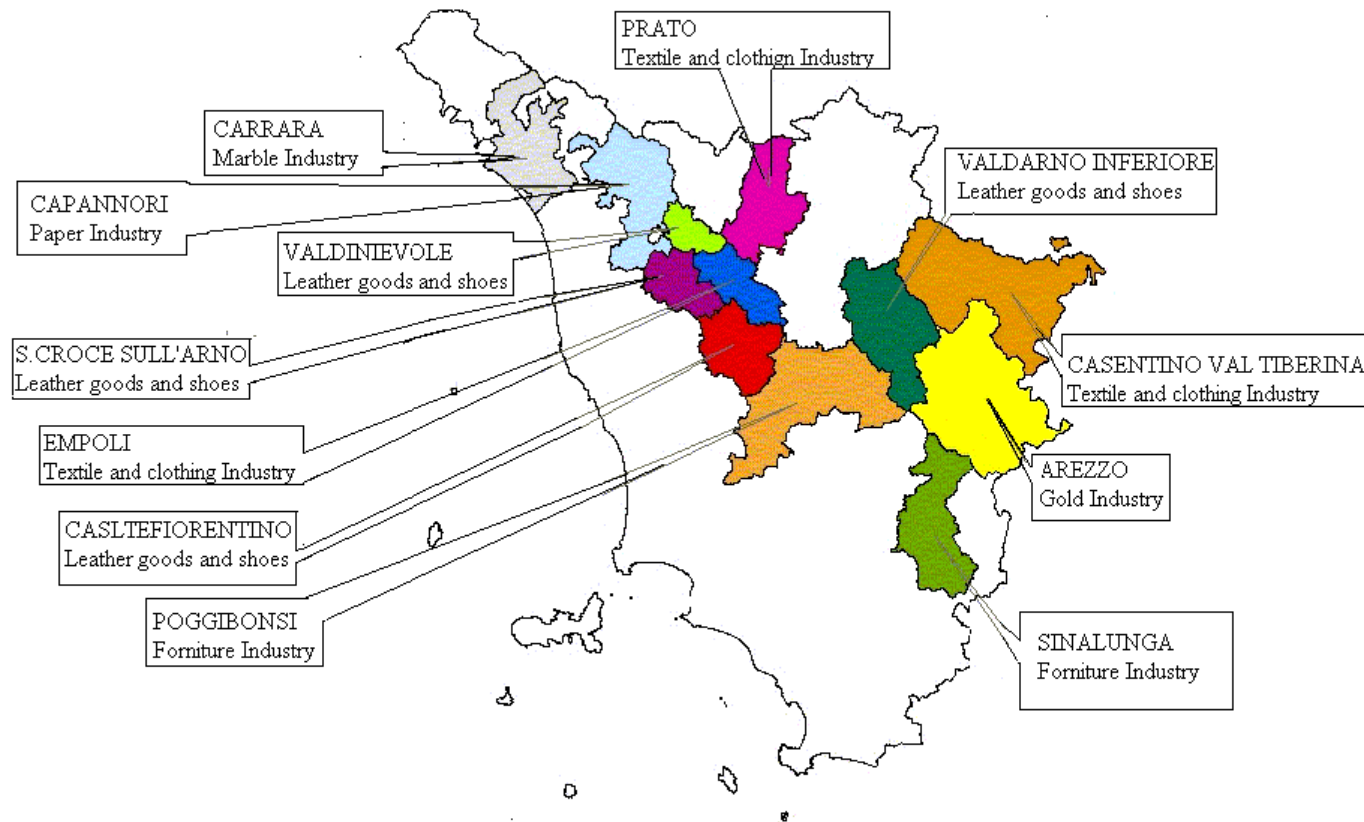
o Spatial distribution

o Age profile

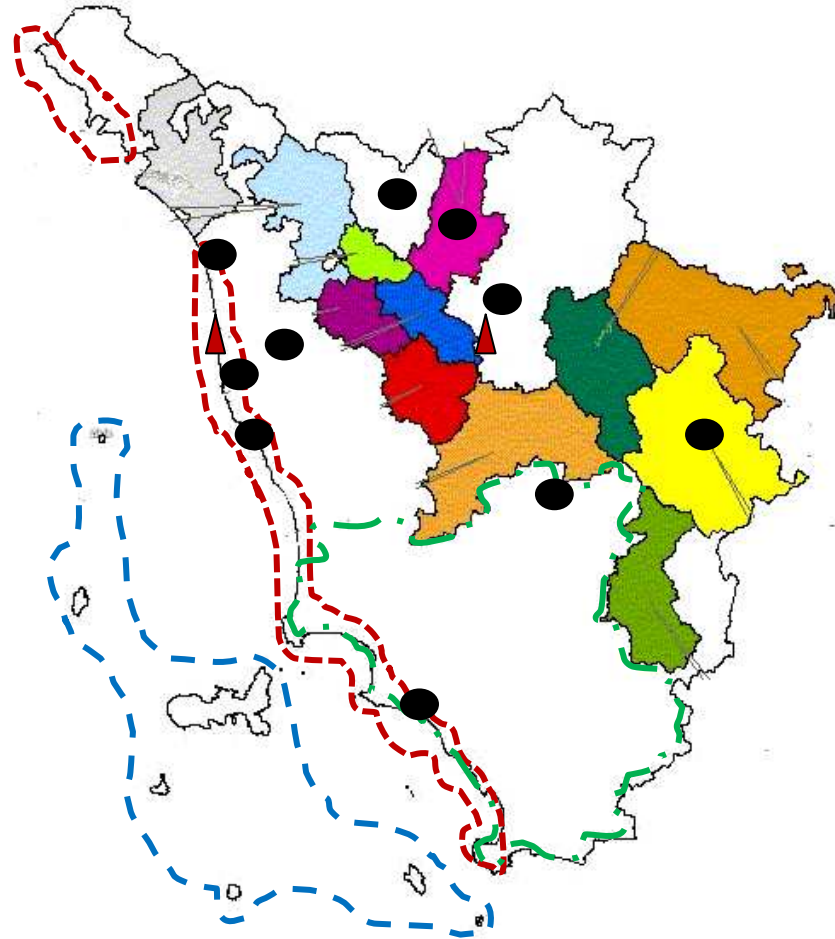
o Gender composition

Census data (2001)

Tuscany Region: territorial structure

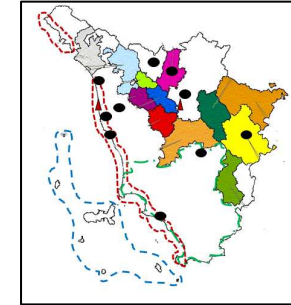


Tuscany Region: territorial structure I

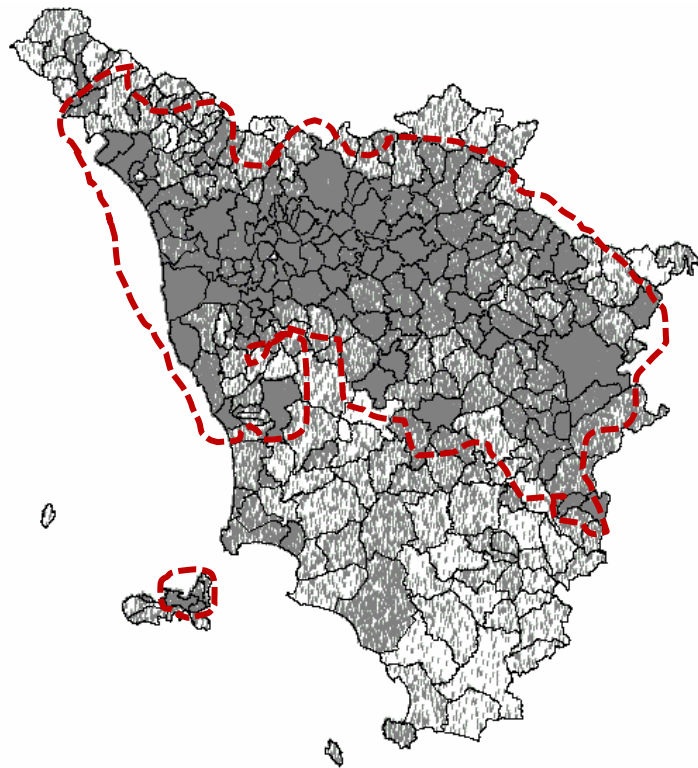


Spatial distribution

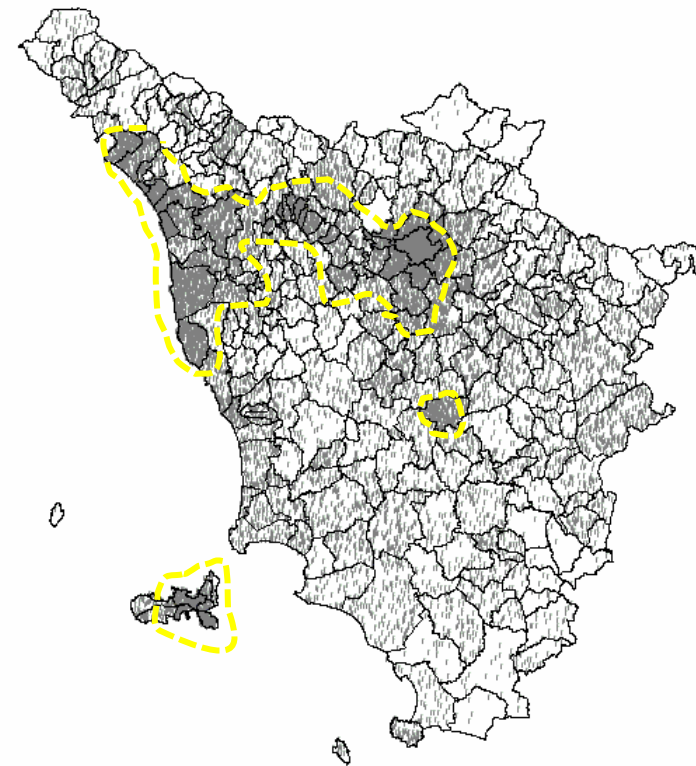
LDCs and MDCs migrants: absolute values



LDCs migrants

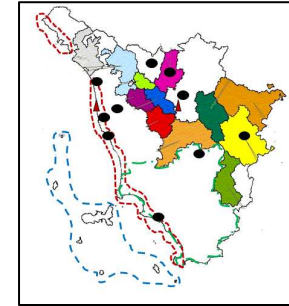


MDCs migrants

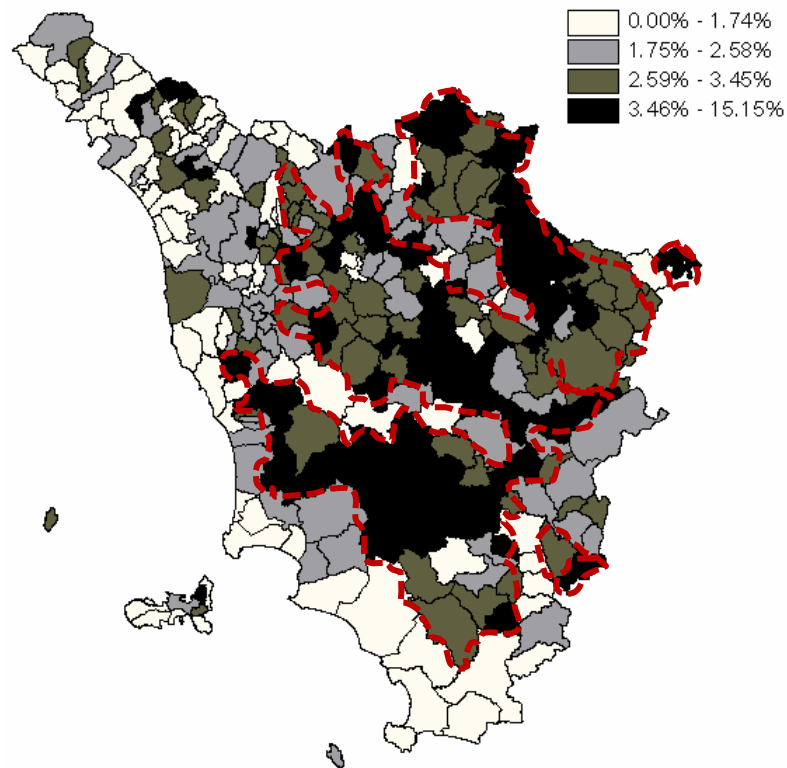


Spatial distribution

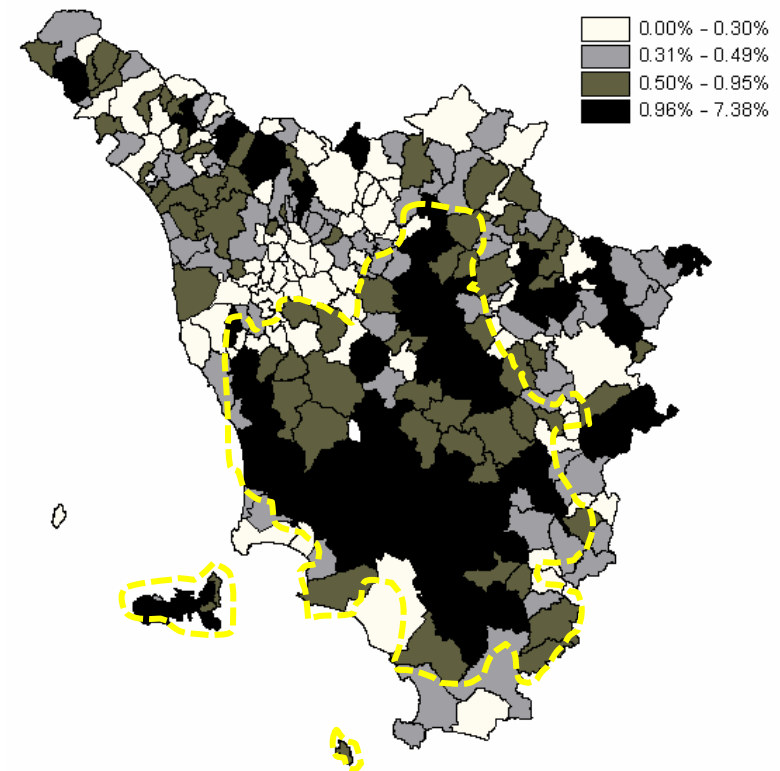
LDCs and MDCs migrants: incidence %



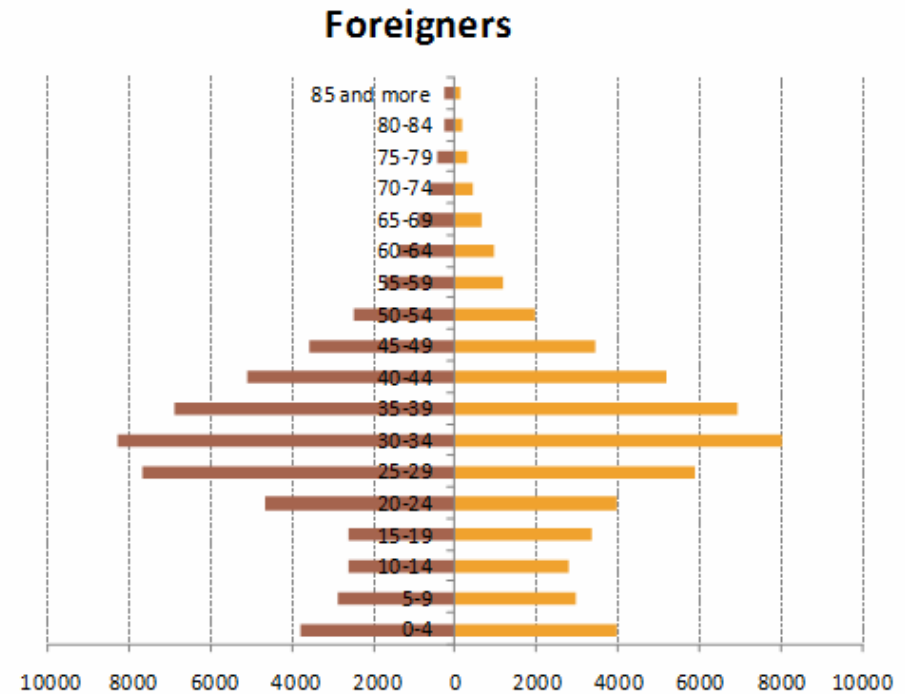
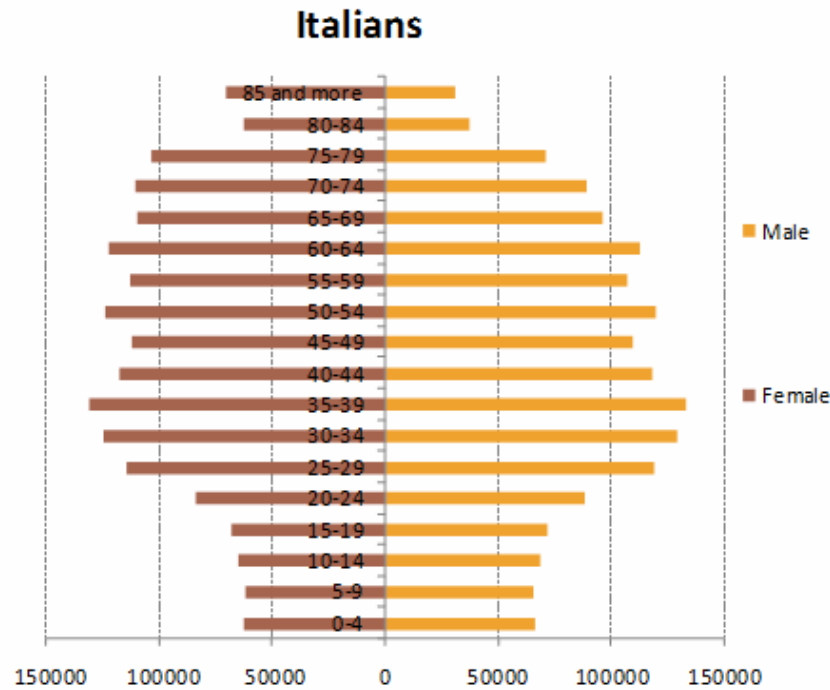
LDCs migrants



MDCs migrants



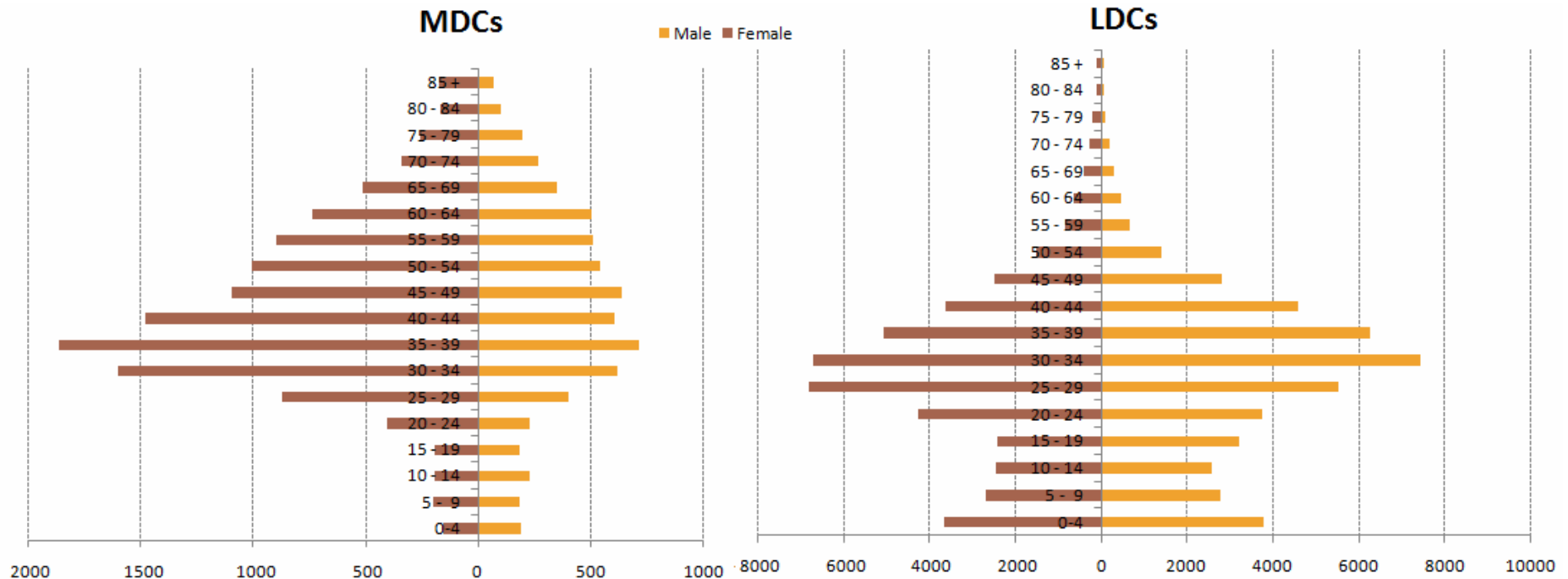
Age and gender composition I



Mean age: 44,9 years
 Modal age class: 35-39
 Ageing Index: 23%
 Ageing Index(1): 200,6%
 Sex ratio: 92,5%

Mean age: 31,6 years
 Modal age class: 30-34
 Ageing Index: 4%
 Ageing Index(1): 22,2%
 Sex ratio: 93,1%

Age and gender composition II



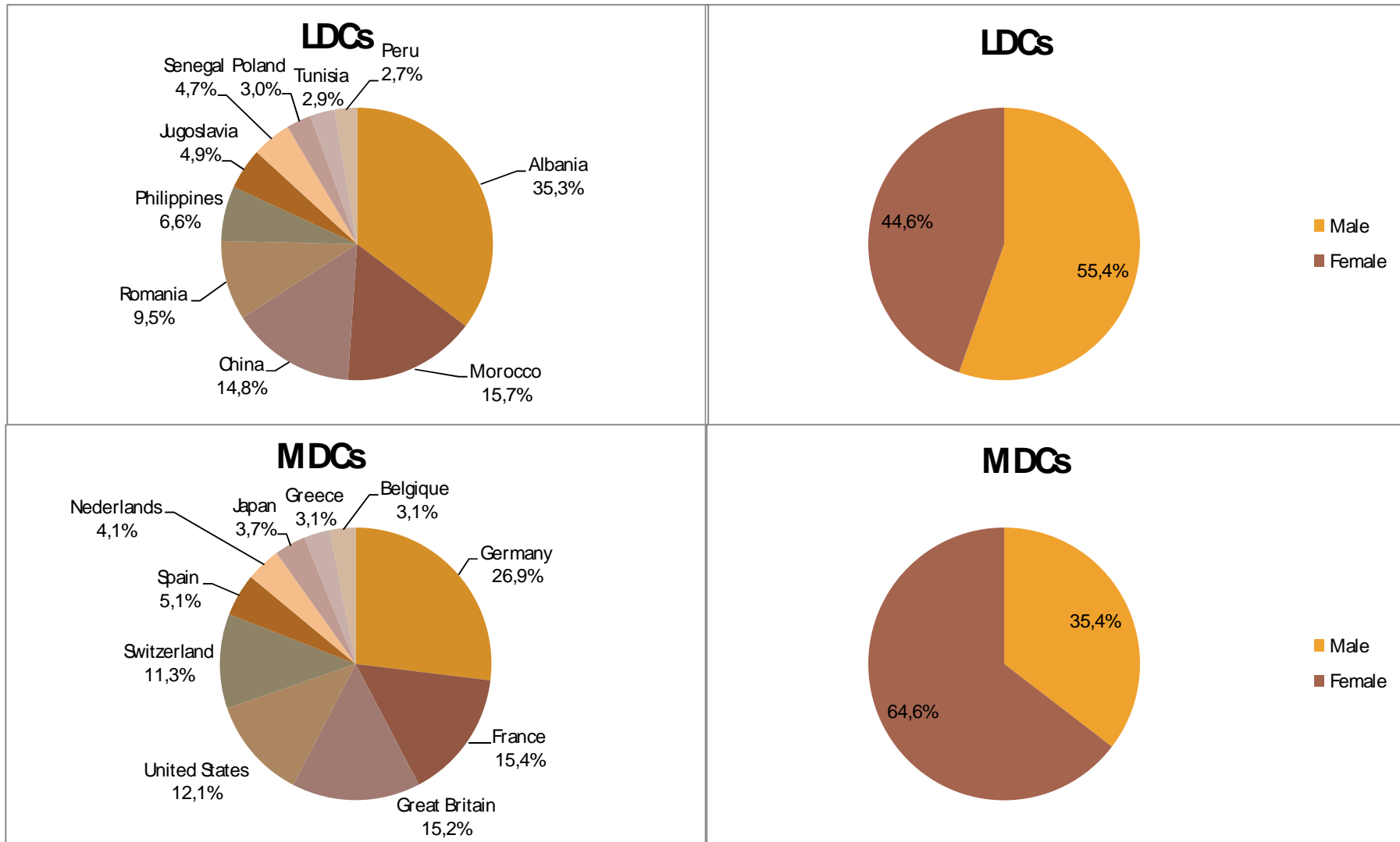
Mean age: 44 years
 Modal age class: 35-39
 Ageing Index: 13%
 Ageing Index(1): 211%
 Sex ratio: 53,4%

Mean age: 29 years
 Modal age class: 30-34
 Ageing Index: 2%
 Ageing Index(1): 10%
 Sex ratio: 103,4%

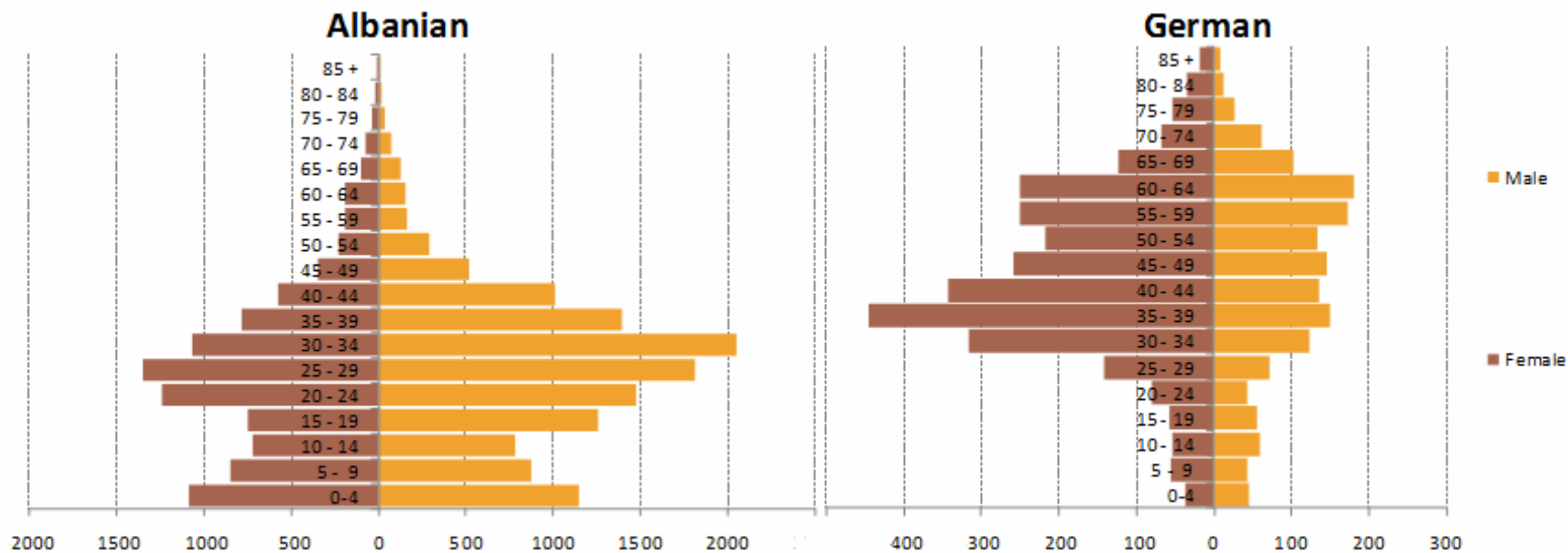
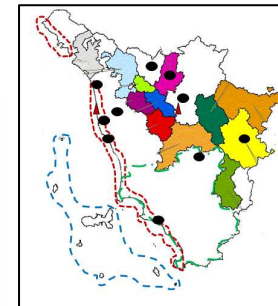
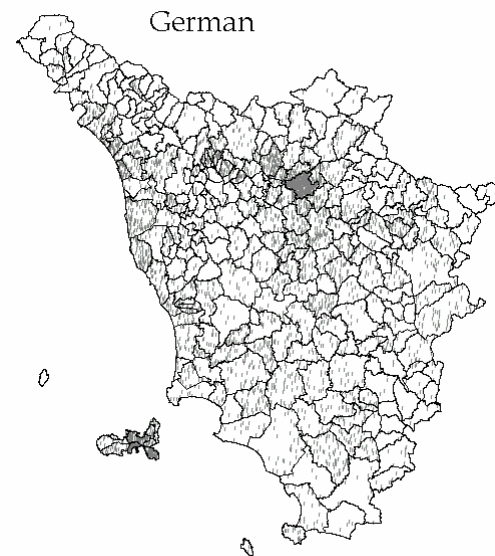
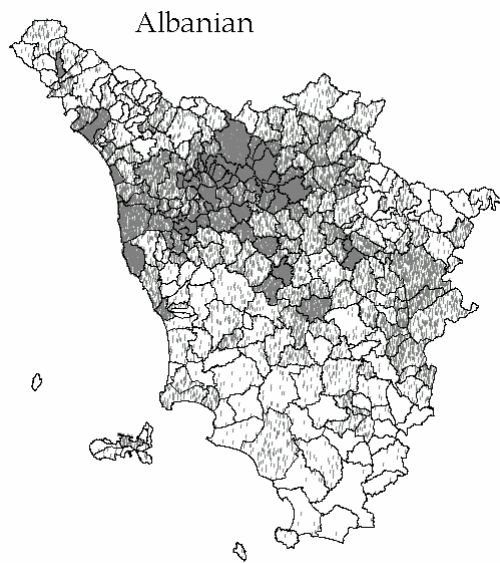
Ethnic composition LDCs and MDCs migrants

LDCs	Male	Female	Total	MDCs	Male	Female	Total
Albania	13.217	9.658	22.875	Germany	1.575	2.788	4.363
Morocco	6.277	3.919	10.196	France	786	1.706	2.492
China	4.961	4.627	9.588	Great Britain	878	1.589	2.467
Romania	2.518	3.609	6.127	United States	761	1.199	1.960
Philippines	1.654	2.603	4.257	Switzerland	742	1.085	1.827
Jugoslavia	1.724	1.442	3.166	Spain	157	663	820
Senegal	2.712	310	3.022	Nederlands	246	420	666
Poland	446	1.475	1.921	Japan	158	447	605
Tunisia	1.191	678	1.869	Greece	253	245	498
Peru	1.147	588	1.735	Belgique	181	313	494
Total	35.847	28.909	64.756	Total	5.737	10.455	16.192

Ethnic composition LDCs and MDCs migrants



Albanian and German



Concluding thoughts

● Dual demographic profile

- ❖ Migrants from LDCs are characterized by a labour profile: they have a young structure age with few old people (65 and more), a great number of young people (0-14) and, more than all, a very high density of people in the first classes of active age. Except for some communities (Polish, Rumanian and Philippines) the gender structure reveals a male dominance.
- ❖ People originated from MDCs have an older structure compare to the one of migrants from LDCs: the modal age class is 35-39 years. The proportion of old people is 13%. Gender composition reveals a dominance of women that are basically concentrated in the second classes of active age: 35-39 and 40-45 years.

● Dual demographic effects (?)

- ❖ LDCs migrants 1) transfer new people in the population with a younger age than the population of destination countries; 2) transfer potential new births; 3) transfer people with higher fertility attitude
- ❖ MDCs migrants?

Concluding thoughts

o **Spatial ethnic segregation**

The differential spatial distribution of migrants has been observed in several European destination-countries. In Tuscany, both migrants from LDCs and migrants from MDCs choose their residence in some specific areas, determining a sort of spatial segregation.

The introduction of this ethnic dimension into the spatial organisation is not only changes the classical concept of the spaces, but also lead to policy changes (Malherous, 2002).

o **Political implication (?)**

In terms of regional policies, how can we define and manage these “new” migration flows?

They are still international migrations or they are interregional movements of people?

Questions?

Suggestions?
