

# Working, having children in France...and what about childcare?

Zsuzsanna Makay  
INED, Paris

*Young Demographer's Session at DGD  
Annual Meeting  
Stuttgart, 7th march 2008*

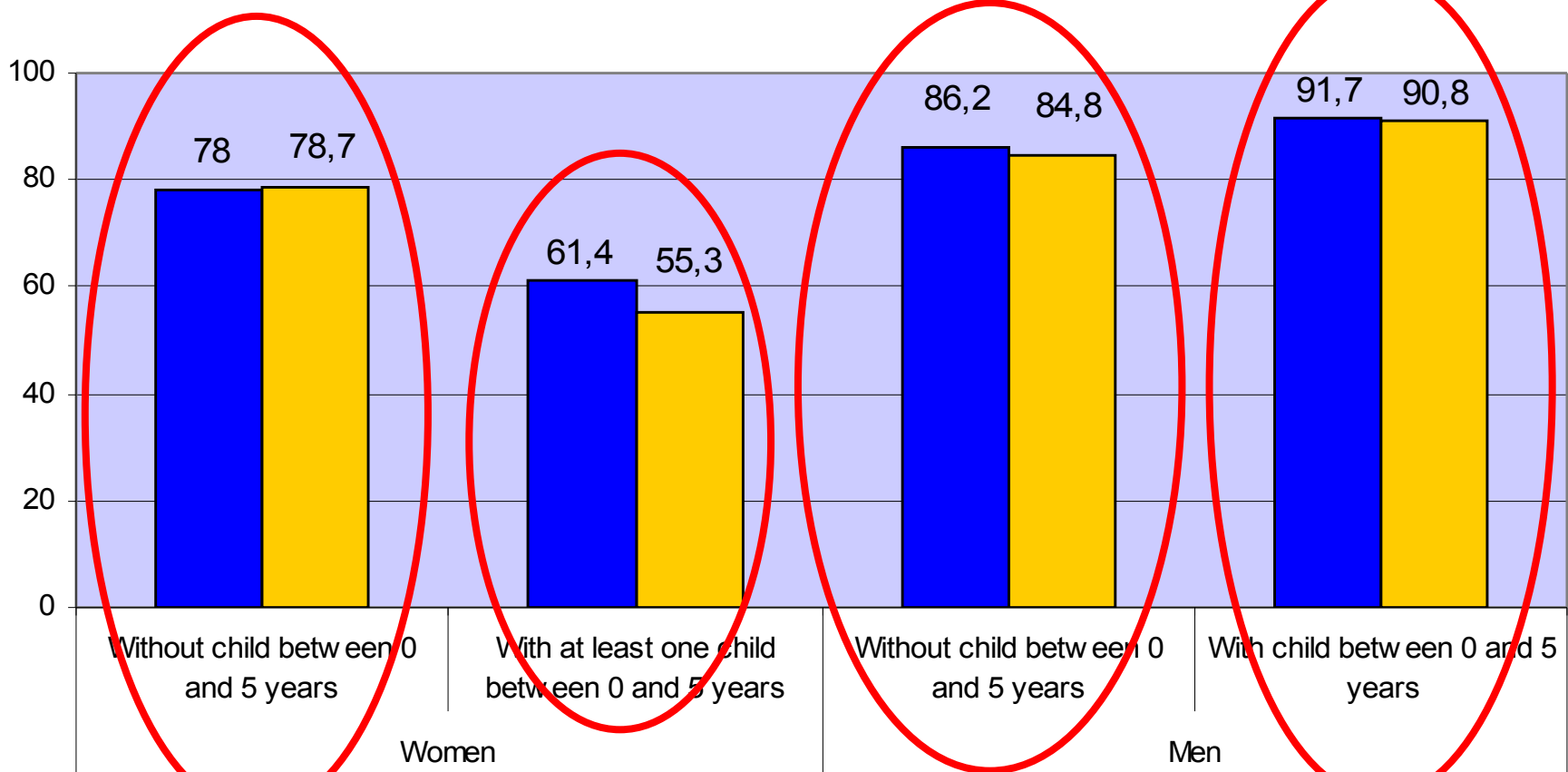


# Introduction 1/3

- High activity of women and men everywhere in Europe
- France: women's part in the active population: 46,5%, above the European average of 44,6%
- BUT: women's employment depends on the presence of young children

# Introduction 2/3

## Employment rates in France and in Germany according to family status and sexe in 2002

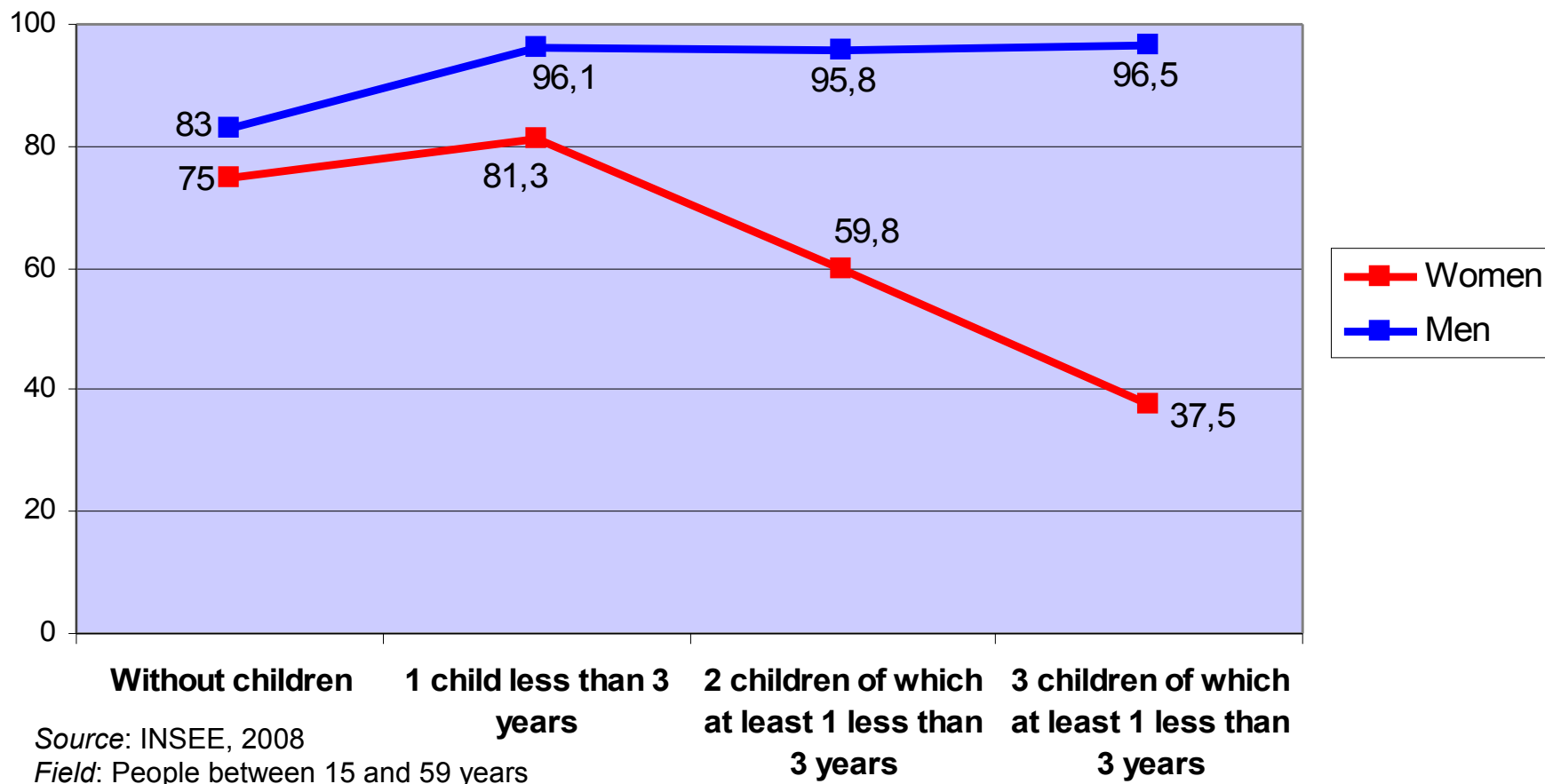


Source: Commission of Europe, 2003  
Field: People between 25 and 44 years

■ France ■ Germany

## Introduction 3/3

**Activity rates in France according to family situation of couples in 2006**





# Research questions

1. During the first year of life who cares for the children in the case the mother works?
  - The situation of first-born children is analysed
  - Only the families where the woman is active
2. On which characteristics depends the care?
  - Socio-demographic factors
  - Job characteristics
  - Men's situation is introduced as explanatory variable



# System of childcare in France

## 1. Parents

- Maternity and paternity leaves
- No paid parental leave for the first child

## 2. Crèches

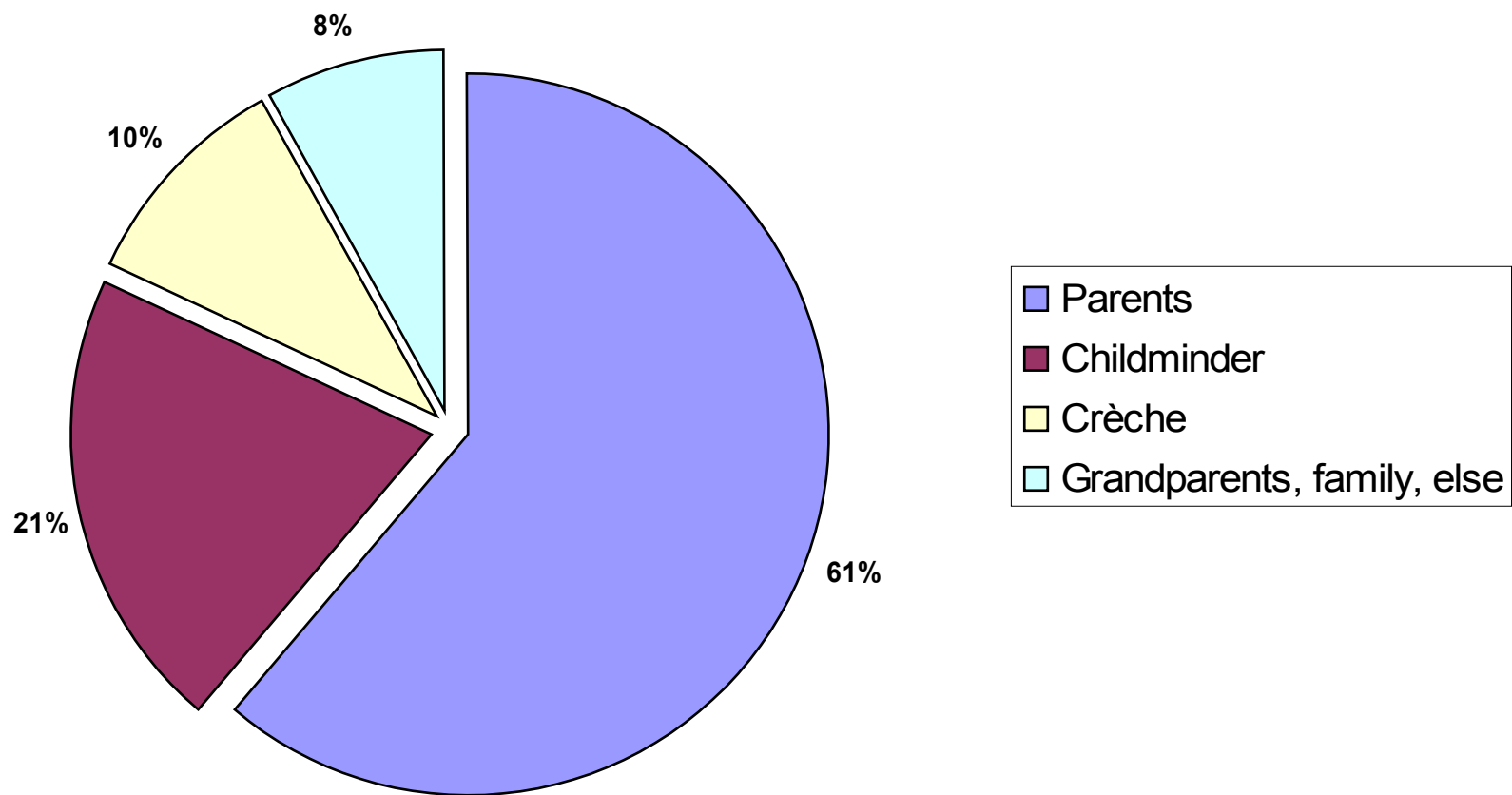
- Children less than 3 years
- Payable according to family resources

## 3. Childminders

- Trained and legal
- Financial support
- More flexible than crèches

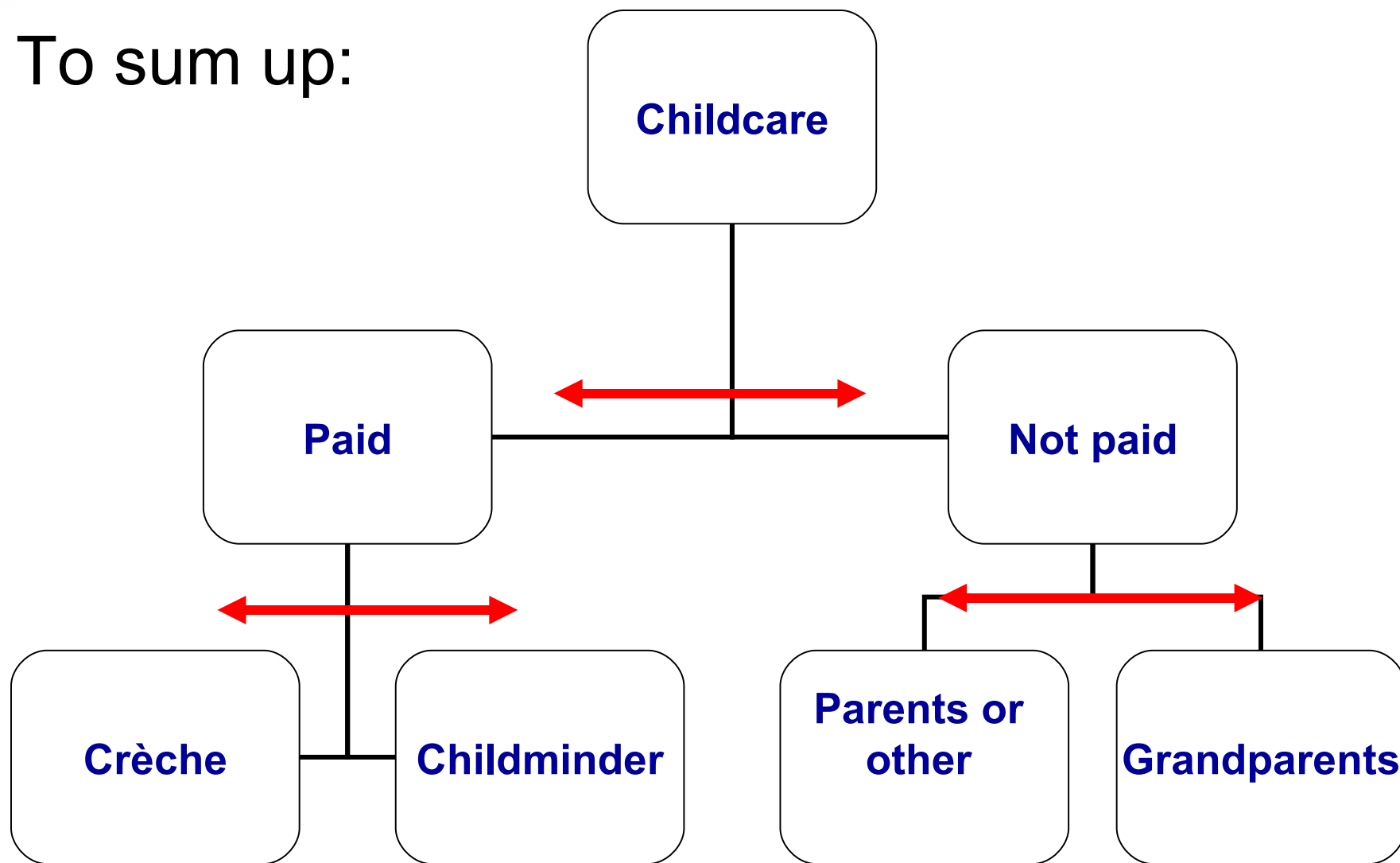
## 4. Informal care: grandparents, friends, etc.

## Childcare of children between 4 months and 2,5 years in 2005 in France



Source: DRESS, 2006

To sum up:





# Data

- French *Families and Employers Survey* conducted by INED in 2004-2005
  - 9500 men and women between 20-49 years
  - Often both members of a couple are interviewed
  - Calendar: professional and family life every year since the 18th birthday

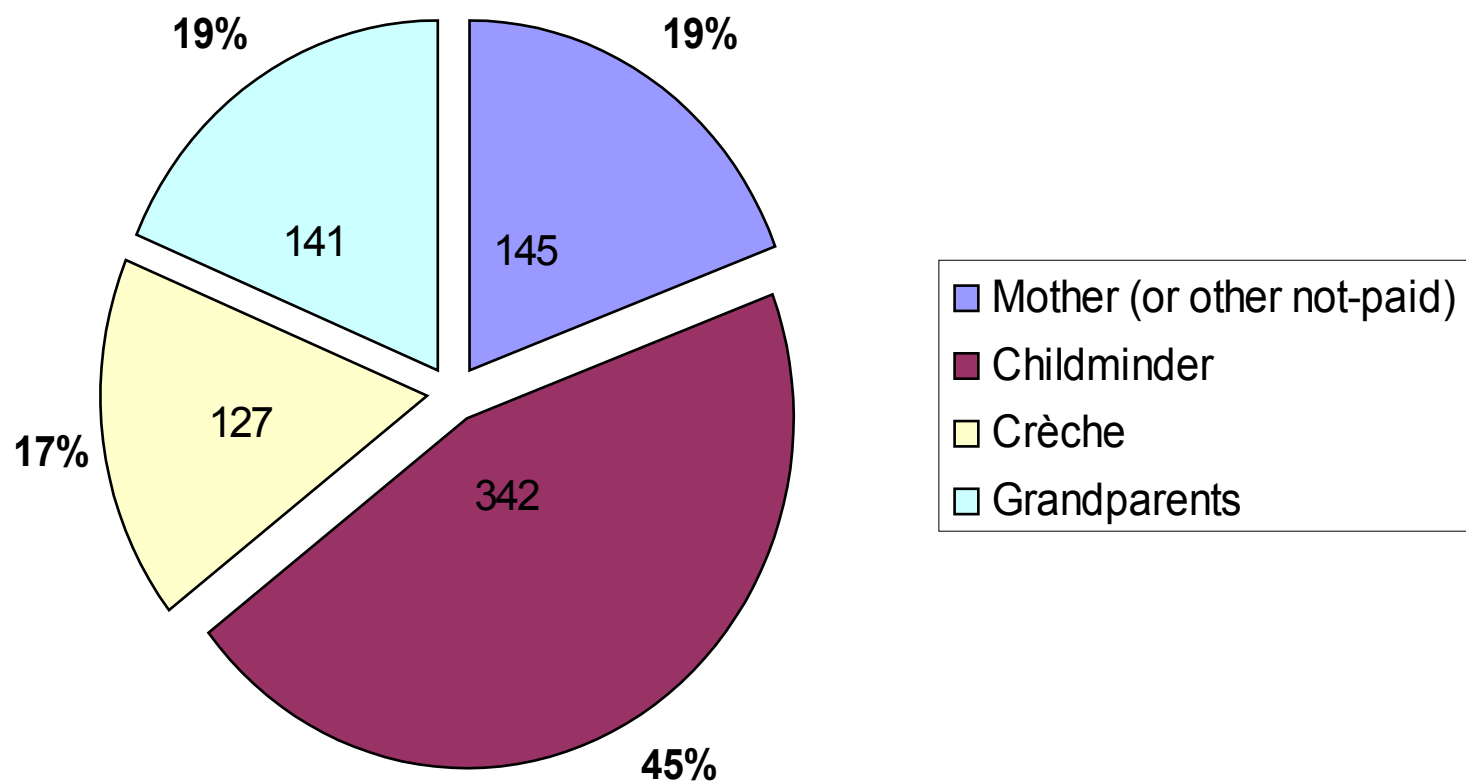
- For every birth:
  - activity and job characteristics before the birth
  - change(s) after the birth
  - activity after the birth for both men and women
- For every child:
  - „*During his first year, how was he cared for?*”
  - „*During the day, who took care for him most time?*”



# Population studied

- 755 women who were active after the first birth...
- ...and their partner regardless of his activity
- we study only the first births between 1984 and 2004

## Childcare during the first year of first born children among active women in France



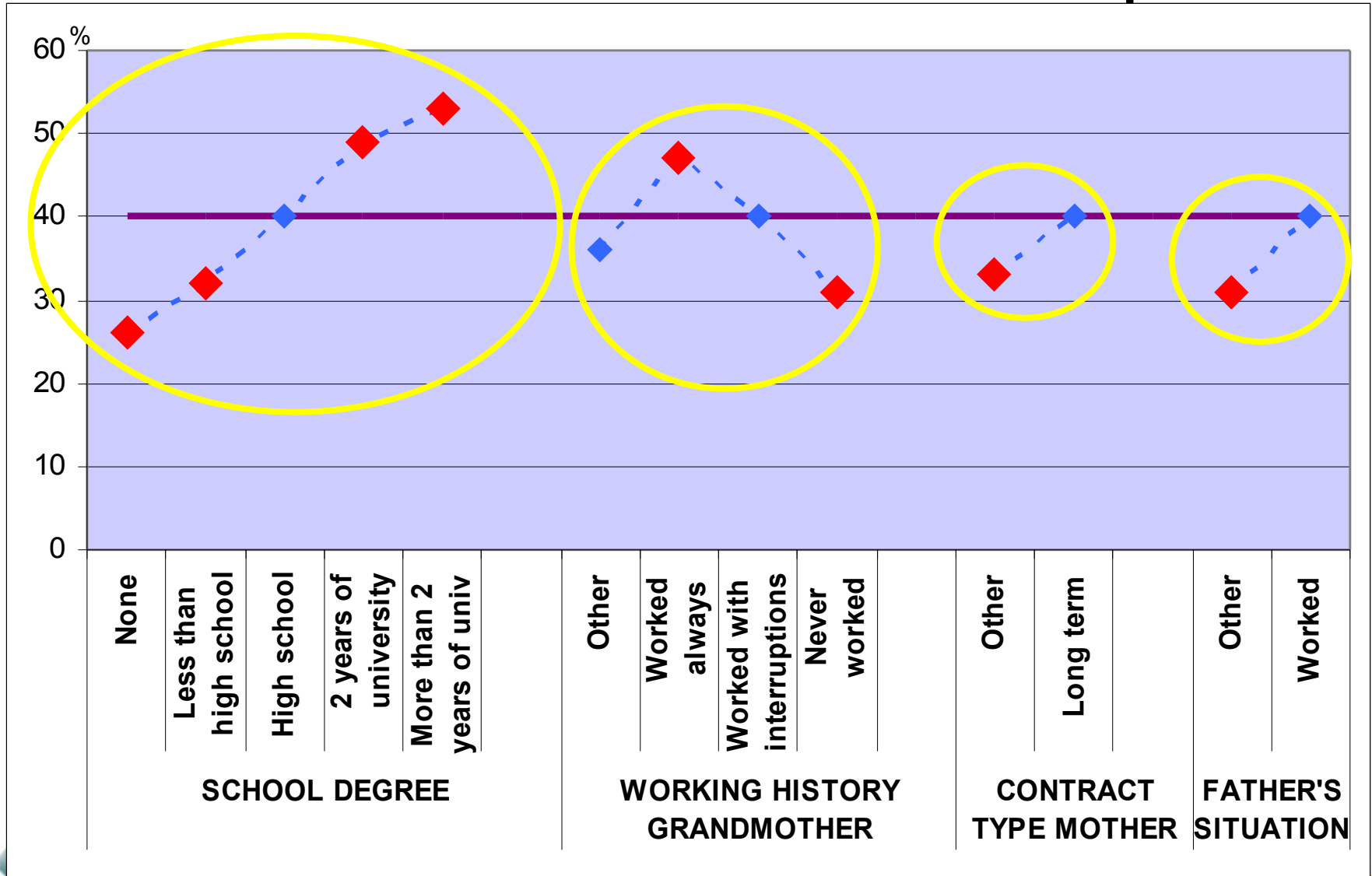
Source: Families and Employers Survey, INED, 2005.

Field: Active women after birth, between 1984 and 2004. N=775

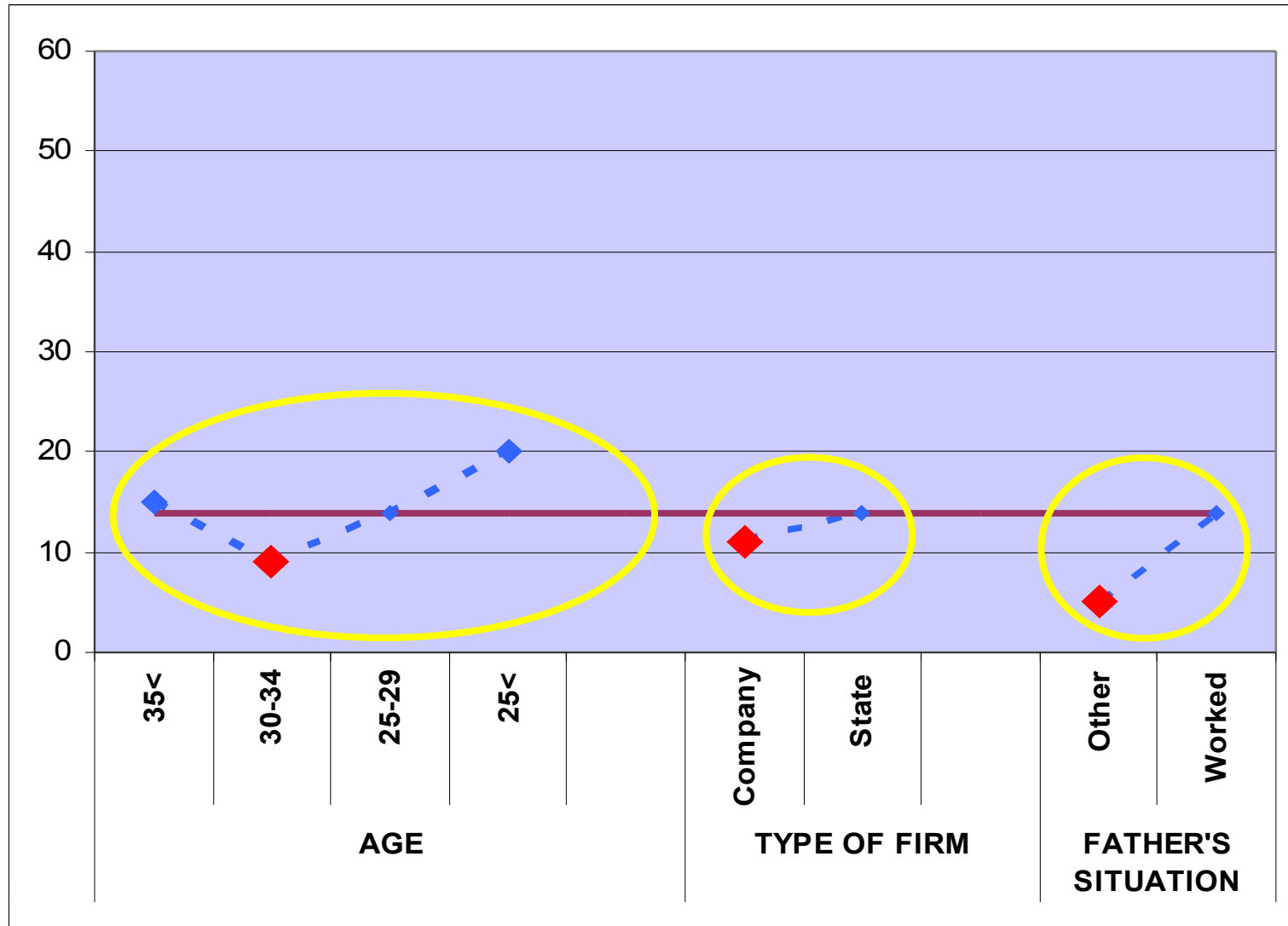
# Explanatory variables

- Socio-demographic:
  - Age at birth first child
  - Year of birth first child
  - Highest school degree
  - History of the professional life of the grandmother
  - Stability of the union
- Characteristics before the birth:
  - Contract of work
  - Type of company
- Characteristics after birth
  - Change in professional life
  - Duration of employment
- Father
  - Situation before the birth
  - Change of his situation after the birth
- Control for all variables in all models

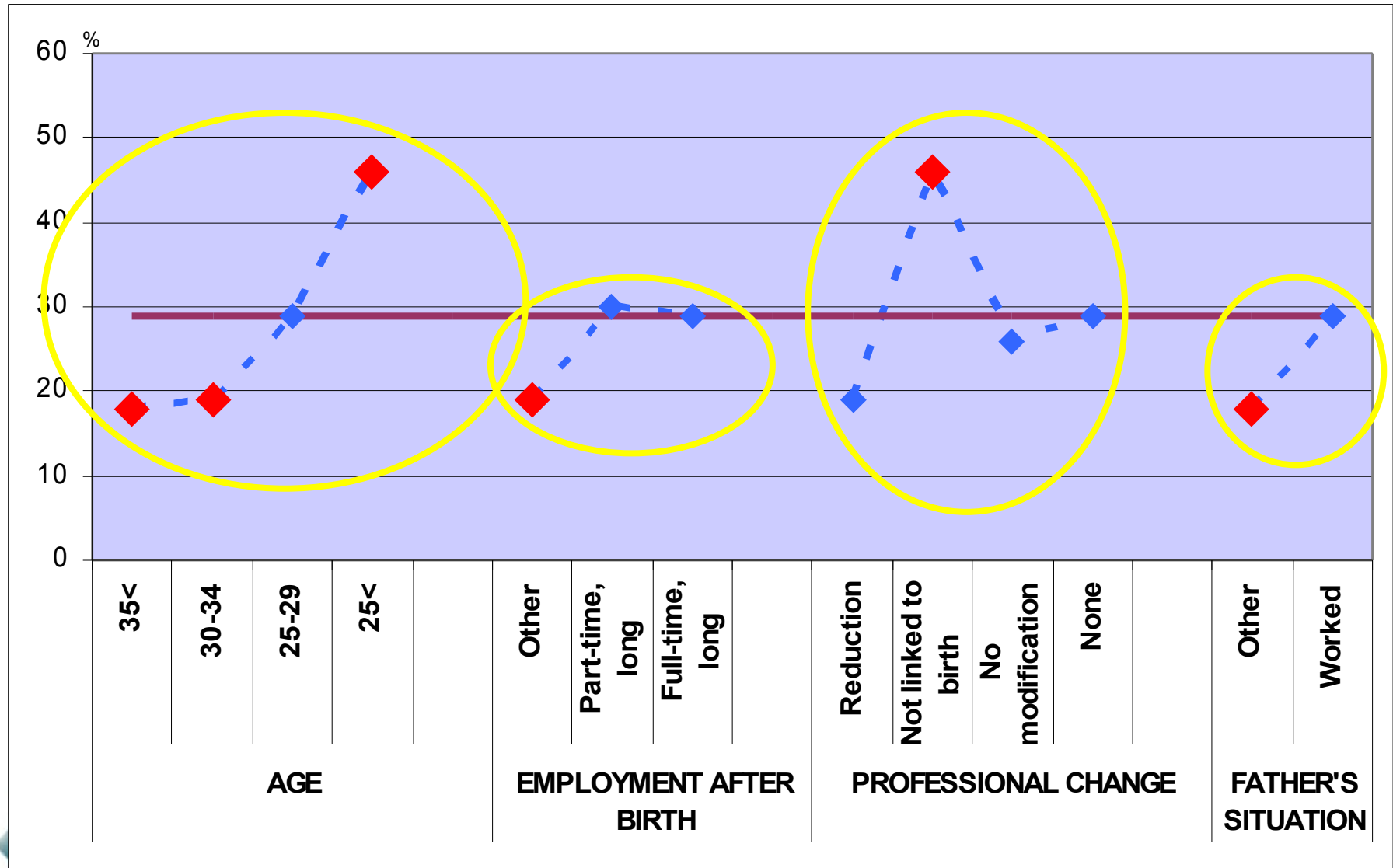
# Estimated probabilities 1: Paid childcare versus non-paid



# Estimated probabilities 2: Paid childcare: crèche versus childminder



# Estimated probabilities 3: The grandparents versus mother or other non- paid care





# Conclusion 1/2

1. Factor of education: the higher the degree, the higher the probability to use paid childcare
3. Factor of employment status: instability of employment raises the probability of not-paid childcare



## Conclusion 2/2

3. Social reproduction of the mothers  
mother's behaviour
4. Effect of the situation of the father and  
especially if he doesn't work
5. At young ages higher probability that  
the grand-parents take care of the  
child



# To do...

- Make the analyse for the second birth to see the differences of rang
- Analyse the interruptions of professional activity after birth: who? length? influence on childcare?



Thank you!

[zsuzsanna.makay@ined.fr](mailto:zsuzsanna.makay@ined.fr)

# Estimated probabilities 2: The mother versus other non- paid childcare

